

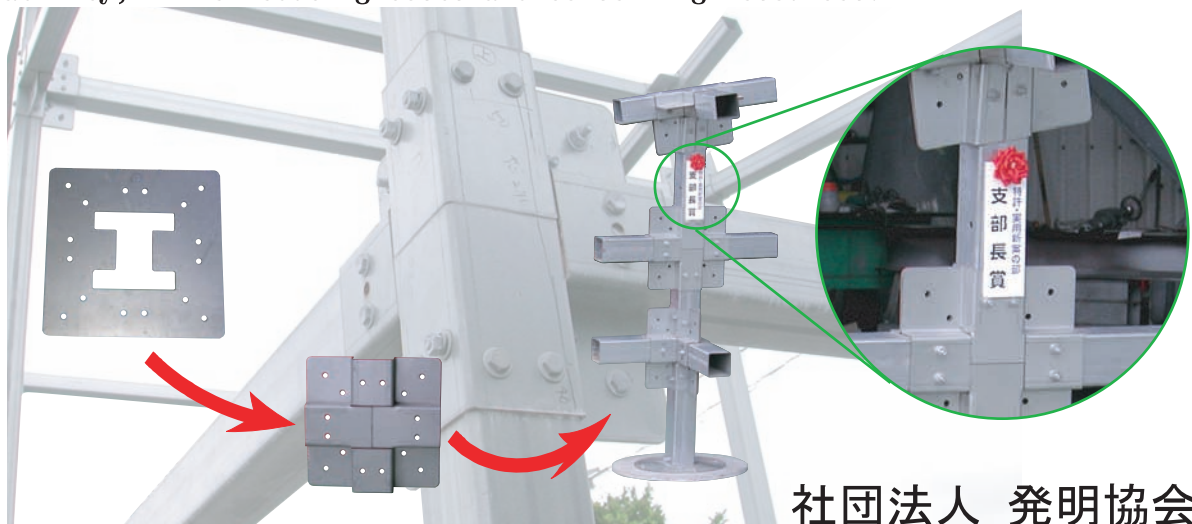
Metal Fitting Connection for Prefabricated Structures

Unwelded House Assembly

In conventional prefabricated structures, welding is used to connect adjoining parts. Welding adds to the assembly and/or disassembly time, and also makes it difficult to reuse structural members after disassembly. Following exposure to rain and wind, welded parts often rust, causing interior corrosion.

The metal fitting connection shown above is manufactured from highly corrosion-resistant ZAMR steel plate. As such, it is not only extremely durable, it is stronger than welding. Nissin's reliable technology in sheet metal processing is at your service.

Nissin's metal fittings allow for shorter assembly and disassembly times, reusability, and higher durability, while reducing costs and conserving resources.



社団法人 発明協会
 沖縄県支部長賞受賞

Corrosion-resistant -- great for the livestock industry

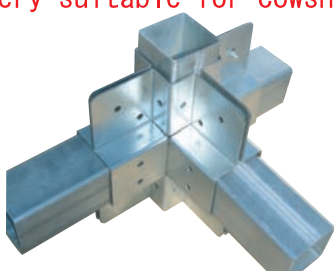
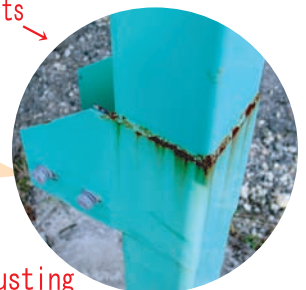


High ammonia and humidity resistance makes it very suitable for cowsheds

Rusting starts from welded parts

Shorter assembly time
 Corrosion resistant

No welding means less rusting



※ 1 ZAM is a registered trademark of Nissin Steel Co., Ltd.
 ZAM is a melted resin steel plate developed by Nissin Steel Co., Ltd., highly resistant against ammonia and humidity.